



BERNAT® WAVY RIDGE CROCHET BLANKET | CROCHET



MATERIALS

Bernat® Blanket™ (10.5 oz/300 g; 220 yds/201 m)
Sonoma (10018) **7 balls or 1400 yds/1280 m**

Size U.S. L/11 (8 mm) crochet hook **or size needed to obtain gauge.**

ABBREVIATIONS: www.yarnspirations.com/abbreviations

Approx = Approximate(ly)

Beg = Begin(ning)

Ch = Chain(s)

Dc = Double crochet

Pat = Pattern

Rep = Repeat

RS = Right side

Sc = Single crochet

St(s) = Stitch(es)

Tr = Treble crochet

WS = Wrong side



EASY

MEASUREMENTS

Approx 46 x 60" [117 x 152.5 cm] .

GAUGE

7 sc and 8 rows = 4" [10 cm].

8 sts and 3.5 rows = 4" [10 cm] in pat.

INSTRUCTIONS

Ch 94. See Chart on page 2.

1st row: (WS). 1 dc in 4th ch from hook (counts as 2 dc). 1 dc in each ch to end of chain. Turn. 92 dc.

2nd row: Ch 3 (counts as dc). 1 dc in next dc. *Skip next 2 dc. 1 tr in each of next 2 dc. Working behind last 2 tr, 1 tr in each of 2 skipped dc. 1 dc in each of next 2 dc. Rep from * to end of row. Turn.

3rd row: Ch 3 (counts as dc). 1 dc in next dc. *Skip next 2 tr. 1 tr in each of next 2 tr. Working in front of last 2 tr, 1 tr in each of 2 skipped tr. 1 dc in each of next 2 dc. Rep from * to end of row. Turn.

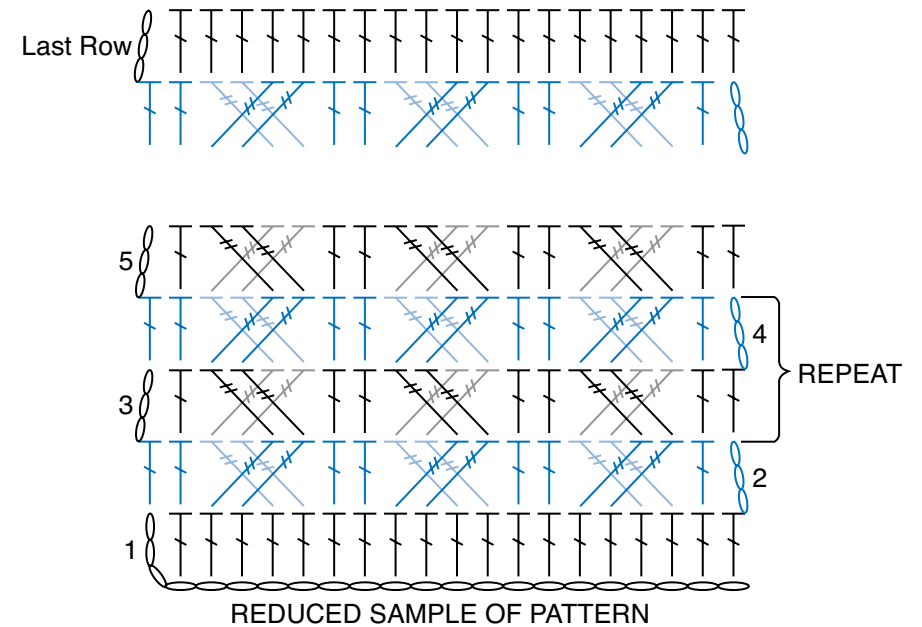
4th row: Ch 3 (counts as dc). 1 dc in next dc. *Skip next 2 tr. 1 tr in each of next 2 tr. Working behind last 2 tr, 1 tr in each of 2 skipped tr. 1 dc in each of next 2 dc. Rep from * to end of row. Turn.

Rep 3rd and 4th rows for pat until work from beg measures approx 59" [150 cm], ending on a RS row.

Next row: (WS). Ch 3 (counts as dc). 1 dc in each st to end of row. Fasten off.



BERNAT® WAVY RIDGE CROCHET BLANKET | CROCHET



STITCH KEY

○ = chain (ch)

┆ = double crochet (dc)

┆ = treble crochet (tr)